



# Certificate of Analysis

QA SAMPLE - INFORMATIONAL ONLY

1 of 3

ICAL ID: 20221129-049  
 Sample: CA221129-030-094  
 Full-spectrum CBD Massage Oil 4000mg, Lavender 8oz  
 Strain: Full-spectrum CBD Massage Oil 4000mg, Lavender 8oz  
 Category: Topical

Bcure  
 Lic. #  
 SD  
 SD, CA 92121  
 Bcure  
 Lic. #  
 Www.bcureco.com And Www.bcure.com.br

Batch#:   
 Batch Size Collected:   
 Total Batch Size:   
 Collected: 12/14/2022; Received: 12/14/2022  
 Completed: 12/14/2022

Moisture NT Water Activity NT	Δ9-THC <b>159.37 mg/unit</b>	CBD <b>4,078.66 mg/unit</b>	Total Cannabinoids <b>4,500.04 mg/unit</b>	Total Terpenes <b>8.007 mg/g</b>
--	---------------------------------	--------------------------------	---	-------------------------------------

## Summary

SOP Used	Date Tested	Pass
Batch		Pass
Cannabinoids POT-PREP-005 High	12/02/2022	Complete
Terpenes TERP-PREP-001	12/13/2022	Complete
Residual Solvents RS-PREP-001	11/30/2022	Pass
Microbials MICRO-PREP-001	12/02/2022	Pass
Mycotoxins PESTMYCO-LC-PREP-001	11/30/2022	Pass
Heavy Metals HM-PREP-001	12/01/2022	Pass
Foreign Matter FM-PREP-001	11/30/2022	Pass
Pesticides PESTMYCO-LC-PREP-001 / PEST-GC-PREP-001	11/30/2022	Pass



Scan to see results

## Cannabinoid Profile

1 Unit = container, 199.66 g.

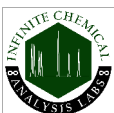
Analyte	LOQ (mg/g)	LOD (mg/g)	%	mg/g	mg/unit	Analyte	LOQ (mg/g)	LOD (mg/g)	%	mg/g	mg/unit
THCa	0.2406	0.0802	ND	ND	ND	CBDV	0.0931	0.0310	0.023	0.23	45.52
Δ9-THC	0.1835	0.0612	0.080	0.80	159.37	CBN	0.1342	0.0447	<LOQ	<1	<LOQ
Δ8-THC	0.0993	0.0331	ND	ND	ND	CBGa	0.1503	0.0501	ND	ND	ND
THCV	0.0793	0.0264	ND	ND	ND	CBG	0.0833	0.0278	0.028	0.28	54.91
CBDa	0.2660	0.0887	0.031	0.31	61.89	CBC	0.2124	0.0708	0.054	0.54	107.30
CBD	0.0818	0.0273	2.043	20.43	4078.66	<b>Total THC</b>			<b>0.08</b>	<b>0.80</b>	<b>159.37</b>
						<b>Total CBD</b>			<b>2.07</b>	<b>20.70</b>	<b>4132.94</b>
						<b>Total</b>			<b>2.25</b>	<b>22.54</b>	<b>4500.04</b>

Total THC=THCa \* 0.877 + Δ9-THC; Total CBD = CBDa \* 0.877 + CBD. LOD= Limit of Detection, LOQ= Limit of Quantitation, ND= Not Detected, NR= Not Reported. Potency is reported on a dry weight basis. Instrumentation and analysis SOPs used: Cannabinoids:UHPLC-DAD(POT-INST-005),Moisture:Moisture Analyzer(MOISTURE-001),Water Activity:Water Activity Meter(WA-INST-002), Foreign Material:Microscope(FOREIGN-001). Density measured at 19-24 °C, Water Activity measured at 0-90% RH. All QA submitted by the client, All CA State Compliance sampled using SAMPL-SOP-001.

## Terpene Profile

Analyte	LOQ (mg/g)	LOD (mg/g)	%	mg/g	Analyte	LOQ (mg/g)	LOD (mg/g)	%	mg/g
Linalool	0.154	0.044	4.094	4.094	cis-Nerolidol	0.215	0.063	ND	ND
Eucalyptol	0.153	0.046	0.2460	2.460	Citronellol	0.598	0.110	ND	ND
Camphor	0.306	0.050	0.0997	0.997	δ-3-Carene	0.306	0.032	ND	ND
α-Bisabolol	0.151	0.045	0.0260	0.260	δ-Limonene	0.486	0.162	ND	ND
α-Pinene	0.151	0.022	0.0196	0.196	Fenchol	0.152	0.027	ND	ND
α-Cedrene	0.151	0.035	ND	ND	Fenchone	0.151	0.014	ND	ND
α-Humulene	0.151	0.023	<LOQ	<LOQ	γ-Terpinene	0.152	0.051	ND	ND
α-Terpinene	0.151	0.027	ND	ND	Geraniol	0.609	0.076	ND	ND
α-Terpineol	0.154	0.026	<LOQ	<LOQ	Geranyl Acetate	0.151	0.027	ND	ND
β-Caryophyllene	0.608	0.135	<LOQ	<LOQ	Isoborneol	0.151	0.025	<LOQ	<LOQ
β-Eudesmol	0.154	0.034	ND	ND	Menthol	0.151	0.032	ND	ND
β-Myrcene	0.153	0.021	<LOQ	<LOQ	(-)-Guaiaol	0.154	0.031	ND	ND
β-Pinene	0.306	0.033	<LOQ	<LOQ	Pulegone	0.151	0.039	ND	ND
Borneol	0.154	0.022	<LOQ	<LOQ	p-Cymene	0.155	0.037	ND	ND
Camphene	0.151	0.023	<LOQ	<LOQ	Terpinolene	0.154	0.015	<LOQ	<LOQ
Caryophyllene Oxide	0.602	0.076	<LOQ	<LOQ	trans-Nerolidol	0.091	0.029	ND	ND
Cedrol	0.151	0.031	ND	ND	<b>Total</b>			<b>0.8007</b>	<b>8.007</b>

NR= Not Reported (no analysis was performed), ND= Not Detected (the concentration is less than the Limit of Detection (LOD)). Analytical instrumentation used: HS-GC-MS; samples analyzed according to SOP TERP-INST-003.



Infinite Chemical Analysis Labs  
 8312 Miramar Mall  
 San Diego, CA  
 (858) 623-2740  
 www.infiniteCAL.com  
 Lic# C8-000047-LIC

*Josh M Swider*

Josh Swider  
 Lab Director, Managing Partner  
 12/14/2022

Confident Cannabis  
 All Rights Reserved  
 support@confidentcannabis.com  
 (866) 506-5866  
 www.confidentcannabis.com



This product has been tested by Infinite Chemical Analysis, LLC using valid testing methodologies and a quality system as required by state law. All LQC samples were performed and met the prescribed acceptance criteria in 16 CCR section 15730, pursuant to 16 CCR section 15726(e)(13). Values reported relate only to the product tested. Infinite Chemical Analysis, LLC makes no claims as to the efficacy, safety or other risks associated with any detected or non-detected levels of any compounds reported herein. This Certificate shall not be reproduced except in full, without the written approval of Infinite Chemical Analysis, LLC.



# Certificate of Analysis

QA SAMPLE - INFORMATIONAL ONLY

2 of 3

ICAL ID: 20221129-049  
Sample: CA221129-030-094  
Full-spectrum CBD Massage Oil 4000mg, Lavender 8oz  
Strain: Full-spectrum CBD Massage Oil 4000mg, Lavender 8oz  
Category: Topical

Bcure  
Lic. #  
SD  
SD, CA 92121  
Bcure  
Lic. #  
Www.bcureco.com And Www.bcure.com.br

Batch#:   
Batch Size Collected:   
Total Batch Size:   
Collected: 12/14/2022; Received: 12/14/2022  
Completed: 12/14/2022

## Residual Solvent Analysis

Category 1	LOQ	LOD	Limit	Status	Category 2	LOQ	LOD	Limit	Status		
1,2-Dichloro-Ethane	ND	0.3	0.1	1	Pass	Acetone	ND	51.246	3.144	5000	Pass
Benzene	ND	0.1	0.0333	1	Pass	Acetonitrile	ND	1.723	0.574	410	Pass
Chloroform	ND	0.154	0.0514	1	Pass	Butane	ND	8.36	2.787	5000	Pass
Ethylene Oxide	ND	0.971	0.324	1	Pass	Ethanol	151.4	5.814	1.938	5000	Pass
Methylene-Chloride	ND	2.602	0.867	1	Pass	Ethyl-Acetate	3.9	2.288	0.329	5000	Pass
Trichloroethene	ND	0.2	0.067	1	Pass	Ethyl-Ether	ND	2.869	0.901	5000	Pass
						Heptane	ND	2.859	0.748	5000	Pass
						n-Hexane	ND	0.729	0.179	290	Pass
						Isopropanol	ND	0.335	0.112	5000	Pass
						Methanol	ND	7.739	2.58	3000	Pass
						Pentane	ND	5.212	1.737	5000	Pass
						Propane	ND	31.953	10.651	5000	Pass
						Toluene	ND	0.864	0.069	890	Pass
						Xylenes	ND	2.572	0.444	2170	Pass

NR= Not Reported (no analysis was performed), ND= Not Detected (the concentration is less than the Limit of Detection (LOD)). Analytical instrumentation used: HS-GC-MS; samples analyzed according to SOP RS-INST-003.

## Heavy Metal Screening

	LOQ	LOD	Limit	Status	
Arsenic	ND	0.009	0.003	1.5	Pass
Cadmium	ND	0.002	0.001	0.5	Pass
Lead	<LOQ	0.004	0.001	0.5	Pass
Mercury	ND	0.014	0.005	3	Pass

NR= Not Reported (no analysis was performed), ND= Not Detected (the concentration is less than the Limit of Detection (LOD)). Analytical instrumentation used: ICP-MS; samples analyzed according to SOP HM-INST-003.

## Microbiological Screening

	Limit	Result	Status
Aspergillus flavus	CFU/g	NR	NT
Aspergillus fumigatus		NR	NT
Aspergillus niger		NR	NT
Aspergillus terreus		NR	NT
STEC		Not Detected	Pass
Salmonella SPP		Not Detected	Pass

ND=Not Detected. Analytical instrumentation used:qPCR; samples analyzed according to SOP MICRO-INST-001.



Infinite Chemical Analysis Labs  
8312 Miramar Mall  
San Diego, CA  
(858) 623-2740  
www.infiniteCAL.com  
Lic# C8-0000047-LIC

*Josh M Swider*

Josh Swider  
Lab Director, Managing Partner  
12/14/2022

Confident Cannabis  
All Rights Reserved  
support@confidentcannabis.com  
(866) 506-5866  
www.confidentcannabis.com



This product has been tested by Infinite Chemical Analysis, LLC using valid testing methodologies and a quality system as required by state law. All LQC samples were performed and met the prescribed acceptance criteria in 16 CCR section 15730, pursuant to 16 CCR section 15726(e)(13). Values reported relate only to the product tested. Infinite Chemical Analysis, LLC makes no claims as to the efficacy, safety or other risks associated with any detected or non-detected levels of any compounds reported herein. This Certificate shall not be reproduced except in full, without the written approval of Infinite Chemical Analysis, LLC.



# Certificate of Analysis

QA SAMPLE - INFORMATIONAL ONLY

3 of 3

ICAL ID: 20221129-049  
 Sample: CA221129-030-094  
 Full-spectrum CBD Massage Oil 4000mg, Lavender 8oz  
 Strain: Full-spectrum CBD Massage Oil 4000mg, Lavender 8oz  
 Category: Topical

Bcure  
 Lic. #  
 SD, CA 92121  
 Bcure  
 Lic. #  
 Www.bcureco.com And Www.bcure.com.br

Batch#:   
 Batch Size Collected:   
 Total Batch Size:   
 Collected: 12/14/2022; Received: 12/14/2022  
 Completed: 12/14/2022

## Chemical Residue Screening

Category 1	LOQ	LOD	Status	Mycotoxins	LOQ	LOD	Limit	Status		
	µg/g	µg/g	µg/g		µg/kg	µg/kg	µg/kg			
Aldicarb	ND	0.030	0.010	Pass	B1	ND	5.88	1.94	Tested	
Carbofuran	ND	0.030	0.004	Pass	B2	ND	8.04	2.65	Tested	
Chlordane	ND	0.075	0.025	Pass	G1	ND	11.85	3.91	Tested	
Chlorfenapyr	ND	0.075	0.025	Pass	G2	ND	5	1.54	Tested	
Chlorpyrifos	ND	0.033	0.011	Pass	Ochratoxin A	ND	14.49	4.78	20	Pass
Coumaphos	ND	0.030	0.007	Pass	Total Aflatoxins	ND		20	Pass	
Daminozide	ND	0.058	0.019	Pass						
Dichlorvos	ND	0.051	0.017	Pass						
Dimethoate	ND	0.030	0.009	Pass						
Ethoprophos	ND	0.030	0.006	Pass						
Etofenprox	ND	0.030	0.006	Pass						
Fenoxycarb	ND	0.034	0.011	Pass						
Fipronil	ND	0.030	0.006	Pass						
Imazalil	ND	0.030	0.009	Pass						
Methiocarb	ND	0.030	0.010	Pass						
Mevinphos	ND	0.040	0.013	Pass						
Paclbutrazol	ND	0.034	0.011	Pass						
Parathion Methyl	ND	0.024	0.008	Pass						
Propoxur	ND	0.030	0.007	Pass						
Spiroxamine	ND	0.030	0.004	Pass						
Thiacloprid	ND	0.030	0.003	Pass						

Category 2	LOQ	LOD	Limit	Status	Category 2	LOQ	LOD	Limit	Status		
	µg/g	µg/g	µg/g	µg/g		µg/g	µg/g	µg/g	µg/g		
Abamectin	ND	0.044	0.014	0.3	Pass	Kresoxim Methyl	ND	0.030	0.010	1	Pass
Acephate	ND	0.030	0.006	5	Pass	Malathion	ND	0.030	0.007	5	Pass
Acequinocyl	ND	0.085	0.028	4	Pass	Metalaxyl	ND	0.030	0.005	15	Pass
Acetamiprid	ND	0.030	0.007	5	Pass	Methomyl	ND	0.032	0.010	0.1	Pass
Azoxystrobin	ND	0.030	0.004	40	Pass	Myclobutanil	ND	0.030	0.010	9	Pass
Bifenazate	ND	0.030	0.008	5	Pass	Naled	ND	0.035	0.012	0.5	Pass
Bifenthrin	ND	0.049	0.016	0.5	Pass	Oxamyl	ND	0.031	0.010	0.3	Pass
Boscalid	ND	0.032	0.011	10	Pass	Pentachloronitrobenzene	ND	0.054	0.018	0.2	Pass
Captan	ND	0.358	0.120	5	Pass	Permethrin	ND	0.030	0.004	20	Pass
Carbaryl	ND	0.030	0.006	0.5	Pass	Phosmet	ND	0.030	0.008	0.2	Pass
Chlorantraniliprole	ND	0.030	0.007	40	Pass	Piperonyl Butoxide	ND	0.030	0.009	8	Pass
Clofentezine	ND	0.030	0.006	0.5	Pass	Prallethrin	ND	0.062	0.020	0.4	Pass
Cyfluthrin	ND	0.056	0.019	1	Pass	Propiconazole	ND	0.064	0.021	20	Pass
Cypermethrin	ND	0.044	0.015	1	Pass	Pyrethrins	ND	0.030	0.004	1	Pass
Diazinon	ND	0.082	0.027	0.2	Pass	Pyridaben	ND	0.030	0.008	3	Pass
Dimethomorph	ND	0.031	0.010	20	Pass	Spinetoram	ND	0.030	0.003	3	Pass
Etoxazole	ND	0.030	0.005	1.5	Pass	Spinosad	ND	0.030	0.003	3	Pass
Fenhexamid	ND	0.044	0.015	10	Pass	Spiromesifen	ND	0.031	0.010	12	Pass
Fenpyroximate	ND	0.030	0.010	2	Pass	Spirotetramat	ND	0.030	0.010	13	Pass
Flonicamid	ND	0.055	0.018	2	Pass	Tebuconazole	ND	0.065	0.021	2	Pass
Fludioxonil	ND	0.058	0.019	30	Pass	Thiamethoxam	ND	0.030	0.009	4.5	Pass
Hexythiazox	ND	0.066	0.022	2	Pass	Trifloxystrobin	ND	0.030	0.004	30	Pass
Imidacloprid	ND	0.070	0.023	3	Pass						

### Other Analyte(s):

NR= Not Reported (no analysis was performed), ND= Not Detected (the concentration is less than the Limit of Detection (LOD)). Analytical instrumentation used: LC-MS-MS & GC-MS-MS; samples analyzed according to SOPs PESTMYCO-LC-INST-004 and PEST-GC-INST-003.



Infinite Chemical Analysis Labs  
 8312 Miramar Mall  
 San Diego, CA  
 (858) 623-2740  
 www.infiniteCAL.com  
 Lic# C8-000047-LIC

*Josh M Swider*

Josh Swider  
 Lab Director, Managing Partner  
 12/14/2022

Confident Cannabis  
 All Rights Reserved  
 support@confidentcannabis.com  
 (866) 506-5866  
 www.confidentcannabis.com



This product has been tested by Infinite Chemical Analysis, LLC using valid testing methodologies and a quality system as required by state law. All LQC samples were performed and met the prescribed acceptance criteria in 16 CCR section 15730, pursuant to 16 CCR section 15726(e)(13). Values reported relate only to the product tested. Infinite Chemical Analysis, LLC makes no claims as to the efficacy, safety or other risks associated with any detected or non-detected levels of any compounds reported herein. This Certificate shall not be reproduced except in full, without the written approval of Infinite Chemical Analysis, LLC.